

TRACKS SAFARIS

WE GET YOU CLOSER



**10 NIGHT LIVINGSTONE, SOUTH LUANGWA AND LAKE MALAWI
ROBIN POPE SAFARIS**



- **Itinerary** Stanley Safari Lodge 3 nights, Luangwa River Camp 3 nights & Pumulani 4 nights
- **Includes:** Transfers starting Livingstone, Zambia and ending Lilongwe, Malawi; accommodation, full board, all local drinks, all activities (except motorized water sports and those not mentioned at Stanley Safari Lodge), laundry
- **Excludes** Gratuities, visa fees where applicable + international flights.
- **Valid** April to Nov

From Zambia's Livingstone, home to the spectacular Victoria Falls and that country's premier park, South Luangwa; ending off at the pristine shores of Lake Malawi!

Livingstone is home to one of the seven natural wonders of the world - **The Victoria Falls** - and offers many opportunities, both adrenaline filled and more sedate, to view this amazing site. There are game viewing opportunities too with a chance to see the white rhino in Mosi-Oa-Tunya National Park and river trips on the Zambezi River.

South Luangwa National Park marks the end of the Great Rift Valley and is one of the last unspoilt wilderness areas and one of the finest wildlife sanctuaries in Africa through which the meandering Luangwa River runs. The ox bow lagoons, woodland and plains of the valley host huge concentrations of game - including elephant, buffalo, leopard, lion, giraffe, hippo - and over 450 species of birds.

Pumulani on Nankumba Peninsula recognized as one of the most beautiful shores of the Lake and borders Lake Malawi National Park. This Park was established in order to protect the cichlid fish unique to the area. In 1984 the park was designated a World Heritage Site.



DAY ONE

On arrival at Livingstone International Airport a representative from Stanley Safari Lodge will meet and transfer you to the lodge for three nights on an all-inclusive basis.

Stanley Safari Lodge is located on the hills overlooking the Zambezi River and Victoria Falls in a bush location. Accommodation is in 10 uniquely designed chalets constructed of teak and local stone and are open fronted or more colonial style brick and tiled rooms, which are closed. Each has a private balcony ensuring spectacular views over the Zambezi River and the suites have plunge pools.



DAYS TWO AND THREE

There is a wide range of activities on offer in the area which can be booked at the lodge - these include trips to see the falls, town museums and markets and sunset cruises.

For the more adventurous, Livingstone boasts a whole host of adrenaline filled activities including whitewater rafting, bungee jumping and micro lighting. Or you may just wish to rest in camp and enjoy the spectacular scenery and peaceful atmosphere. The day will end with a relaxed dinner and perhaps drinks in the wine cellar.

DAY FOUR

Today you will be transferred by road to Livingstone Airport to connect with your onward flight to Mfuwe in the South Luangwa National Park. A guide will meet you at Mfuwe Airport for your transfer to Luangwa River Camp for 3 nights on an all-inclusive basis.

Luangwa River Camp sits nestled under an ancient ebony grove on the banks of the Luangwa River overlooking the game rich area known as the Luangwa Wafwa. This small and intimate camp has just five bush suites with brick walls and thatch roofs and each suite has an ensuite bathroom with bathtub looking out onto your own

private corner of Africa. Both the bedroom and bathroom are fronted with large sliding doors leading onto a decked area allowing a lovely breeze into the room and great views onto the river.

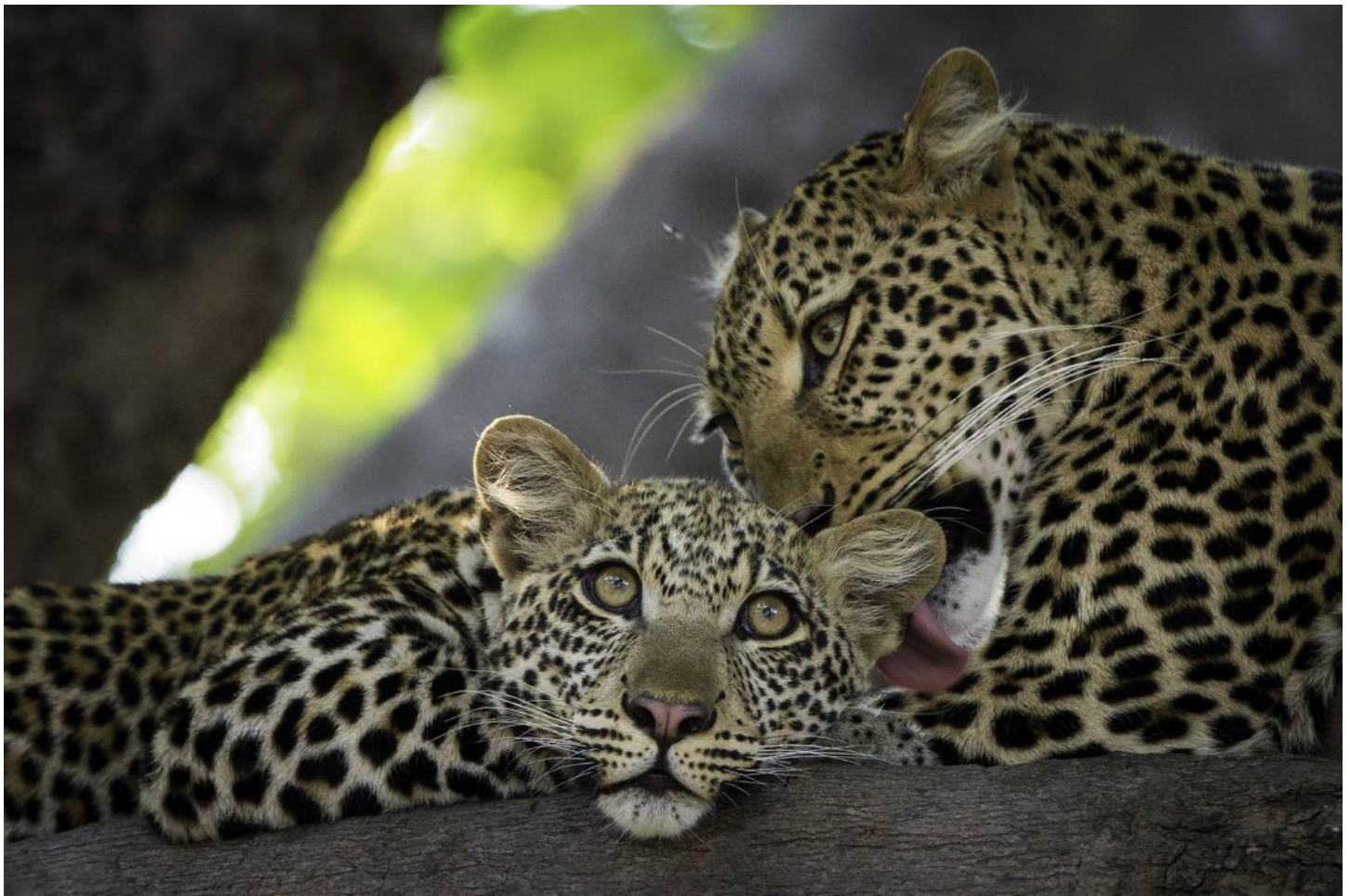
The main area stretches over various elevated decked levels and there is a double plunge pool with a waterfall. Seating areas around the pool and open plan bar offer uninterrupted views across the river and into the National Park.



Depending on your arrival time you may settle in for some lunch, a siesta then off on an afternoon activity. On your game drive there is an option to turn back after sundowners or you can continue to see what nocturnal wildlife you can spot, returning to camp by 8pm.

DAYS FIVE AND SIX

The next couple of days will be spend enjoying the fabulous wildlife of the South Luangwa National Park. Explore the park on a walking safari or get closer to the wildlife of a 4 x 4 safari. You can visit Tribal Textiles for locally printed fabrics – or take a trip to Kawaza Village to experience an authentic Zambian village, interact with local people and sample a local meal.



DAY SEVEN

After an early breakfast transfer to Mfuwe Airport for your flight to Lilongwe. The flight time to Lilongwe is approximately 50 minutes and on arrival at Lilongwe's Kamuzu Airport you will be met and assisted with immigration procedures and the payment of airport taxes. You will then transfer by road to Pumulani for 4 nights on an all-inclusive basis.

Pumulani is situated on the west side of the Nankumba Peninsula in the South end of Lake Malawi – romantically called 'The Lake of Stars'. The ten villas are scattered around the hillside and are individual in shape and style but all have a spacious bedroom, bathroom and extensive sitting area. The front sliding doors open onto the deck – elevated above the ground giving optimal views.

The central dinning and bar area is high above the lake with the most spectacular views and leads onto an expansive deck. The infinity swimming pool is on a lower terraced deck and the lakeshore bar offers light snacks as well as refreshments.

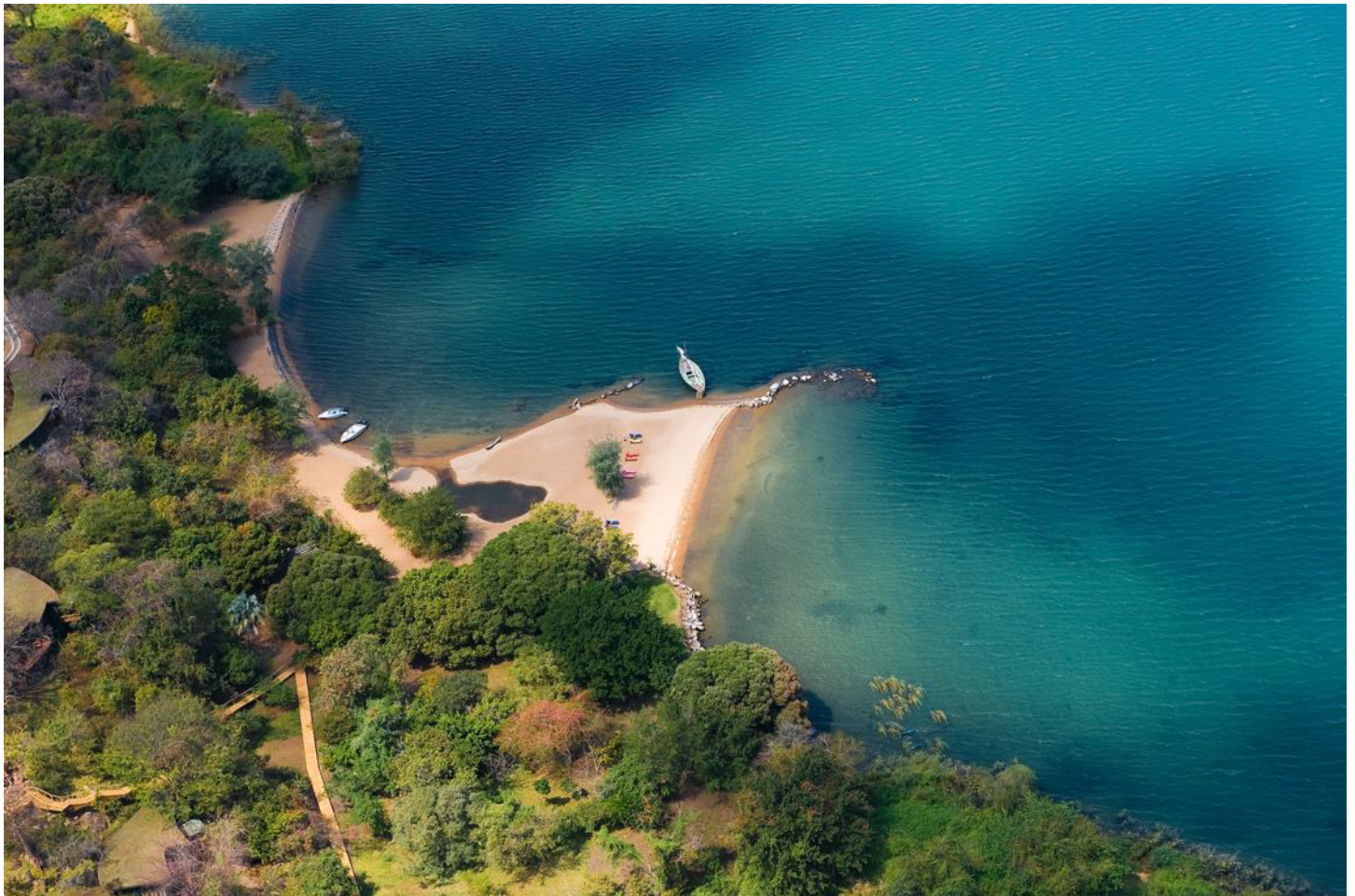
Meals will be served in the dining area, on the beach or by arrangement on your private deck. The stunning setting of the lodge and the unique comfort of the rooms means that you may choose to simply relax - but there are enough activities available to keep you busy if you prefer!

DAY EIGHT

Enjoy the first full day of relaxation at Pumulani. The remote beach setting is ideal for those who simply want to soak up the sun and swim in the clear blue waters of the lake. If you prefer to swim in a swimming pool there is an infinity swimming pool near the central dining area with grand views over the lake. For those

seeking activity the lodge offers many watersports activities - snorkeling, fishing, sailing, kayaking, waterskiing, wake boarding and fun tube rides (all motorized activities are excluded in the price).

At the end of the day enjoy sun downers whilst sailing on the lake in the traditional dhow!



DAY NINE

Lake Malawi is the world's most ecologically diverse lake – its crystal clear waters are home to more than a thousand species of fish, including hundreds of species of colourful cichlids. The lodge offers special diving courses at the best diving spots near one of the islands.

For those who are interested in Malawian village life you can take a guided walk through one of the local villages. Malawians are renowned for being amongst the friendliest people in Africa and during your stay you will have the opportunity to meet local people. Or you can also simply relax in the beautiful and tranquil scenery!

DAY TEN

Your last day at the lodge - today you have the opportunity to continue to relax in the beautiful surroundings, snorkel in the lake, or take a walk to the local village for an insight into how village life works in Malawi.



DAY ELEVEN

Today you will be transferred back to Lilongwe time for your connecting flight back to the UK.

TRACKS SAFARIS – WE GET YOU CLOSER TO MALAWI!

TRACKS SAFARIS
WE GET YOU CLOSER

