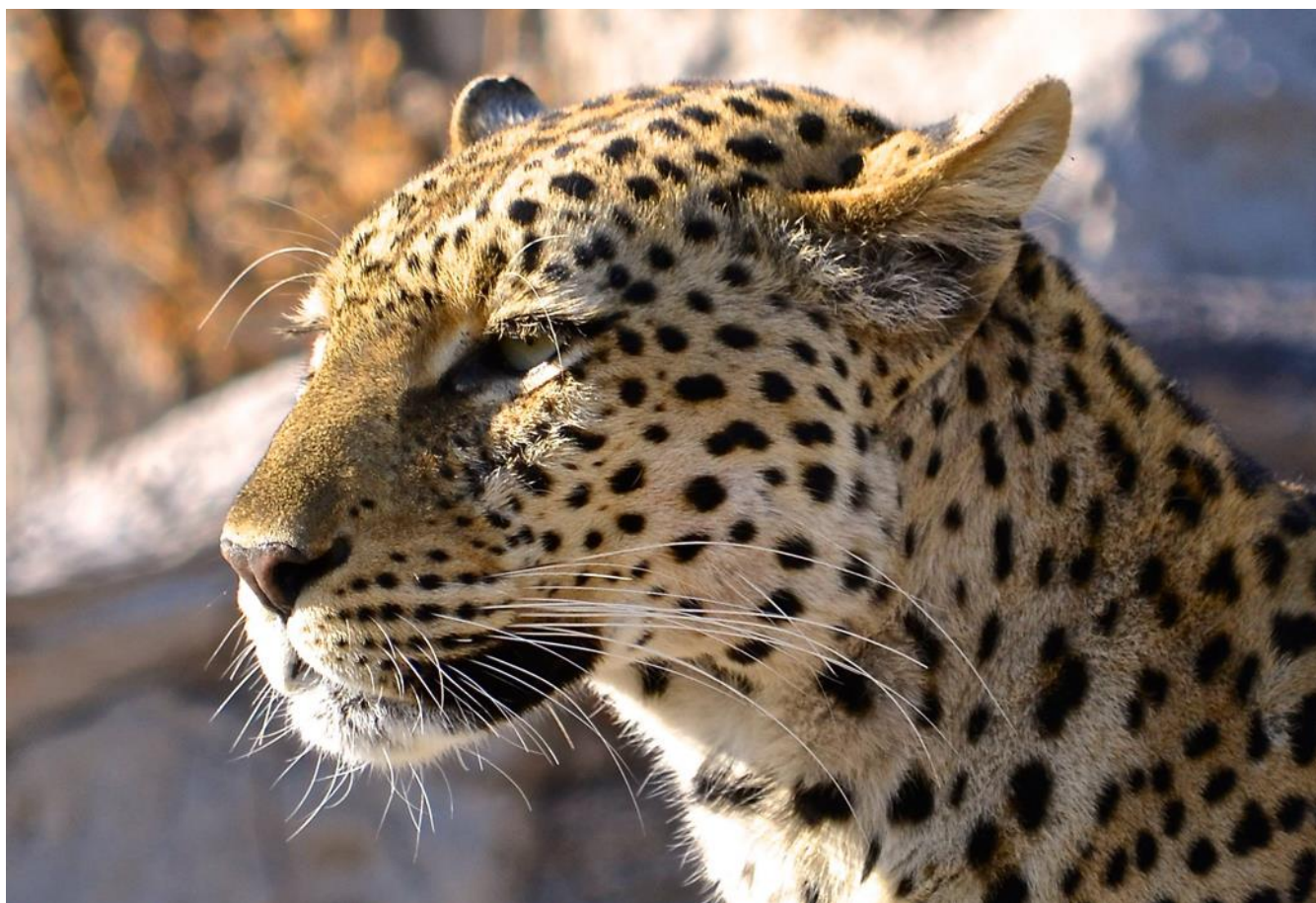


TRACKS SAFARIS

WE GET YOU CLOSER



15 NIGHT LUXURIOUS SOUTH LUANGWA SAFARI AND LAKE MALAWI - TIME AND TIDE & KAYA MAWA



The Luangwa Valley has long been regarded as one of Africa's finest wildlife reserves – it's unspoilt natural beauty and abundant game and variety of birds make it an ideal destination for an African safari holiday.

This is one of our most popular safaris incorporating stays at four individually designed bush camps being offered in some of the most game rich areas of southern Africa. This is a very varied safari in terms of accommodation, habitat and wildlife viewing without having to fly or drive huge distances. Game drives and walks are available from all of the camps whilst night drives take place in the first hours of darkness, the best time to find the predators in action.

Walking safaris have rightly been described as the ultimate way to experience the African wilderness. You become a part of the environment rather than just a spectator and there are few experiences more exciting than tracking big game through the African bush.

Enjoy a walking safari between any of the remote bush camps or enjoy fabulous 4 x 4 game drives. However you choose to enjoy your African safari holiday, you will be escorted throughout by a team of some of Zambia's best safari guides.

DAY ONE

On arrival into Lusaka International Airport you are met and assisted to check in for your flight to Mfuwe. If you are arriving later in the afternoon we would recommend a night in Lusaka. On arrival into Mfuwe Airport you will be met by Time and Tide and transferred to Kakuli Bush Camp for 3 nights on an all-inclusive basis.

Perched high above the Luangwa River, Time + Tide Kakuli offers impressive vistas of the river's many visitors below. Designed to celebrate the panoramic setting the rooms have a long, low profile and a bright, airy feel. Freshly redesigned the rooms offer comfort in all seasons by incorporating features such as a covered open-air lounge and indoor and outdoor showers. From your room you can listen to singing hippos, see bee-eaters perform their aerial acrobatics and watch elephants and giraffes wandering down to the river to drink.

The elevated main chitenge and deck overlook the river and a permanent waterhole. Beneath the lounge is a wildlife hide that offers up-close views of the wildlife stopping by for a drink. Don't be surprised if brunch is interrupted by a giraffe arriving to feed on the nearby trees!

In the dry season, the camp is a fantastic base for exploring by vehicle and foot. The area is renowned for some of the best game viewing opportunities in Zambia, with abundant leopards, a resident lion pride and a seasonal colony of the immensely beautiful carmine bee-eaters.



DAY FOUR

Today you will be driven deep into the National Park along the Lewi River to Luwi Bushcamp for 3 nights on an all-inclusive basis.

Luwi bush camp is a wonderfully rustic and authentic little camp set in the shade of large trees close to a permanent lagoon. The four rooms at Luwi have dry grass walls and thatched roofs with en-suite bathrooms open to the trees and stars above.

Your safari guide will introduce you to the armed escort scout who will accompany you on your first real walking safari. The guide will take time to point out the tracks and signs that he uses to interpret the bush. Your first night in the bushcamp is likely to be accompanied by the noises of animals around camp. When day breaks, your guide will interpret the calls that kept you awake as you head out together and pick up the fresh tracks of a pride of lion or investigate the alarm calls of the local troop of baboon. This is no nature trail - this is the real thing - you are tracking big game through the African bush, on foot like the first Luangwa pioneers.



DAY SEVEN

This morning you have the option to walk to Nsolo Bushcamp - head out from camp as you did on the previous day but this time your guide will walk you down the Luwi river course. Your destination is Nsolo Bush camp and after a few hours gentle walking you will arrive into camp. A cool drink will be ready for you, brunch will be on the table and your bags will be in your room.

Your room for the next three nights will be a raised deck with dry grass walls and a tall, cool thatched roof. Once more your en-suite bathroom is open to the sky above. **With just** four spacious chalets raised wooden decks with grass and reed walls and large, open air en-suite bathroom – Nsolo is a true bush camp. Each chalet runs on solar power and is set under the shade of evergreen trees with private verandahs overlooking the surrounding bush and waterholes in the Luwi River.

On the banks of the Luwi River is an open sided, shady chitenje lounge with a bush bar and dining area offering a peaceful refuge where guests can study the camps collection of books or watch a variety of game visiting the permanent pools of water in the Luwi riverbed.



DAY TEN

Today you will be transferred by road to Mchenja for 3 nights on an all-inclusive basis. Flanked by a grove of towering ebony trees on one side and the Luangwa River on the other Mchenja overlooks a wide river expanse where you can often see large herds of elephants crossing the Luangwa River.

Each room features soft beds, large picture windows and a clawfoot bath looking out onto the river. The two bedroom, two bathroom family suite is the perfect retreat for friends and families traveling together. A refreshing pool is ideal for relaxing between safari activities - just be ready to share with the thirsty elephants!

Explore the region's diverse habitats on game drives and walking safaris – the game viewing in this area is superb with leopards and lions sometimes wandering through the camp's ebony grove.



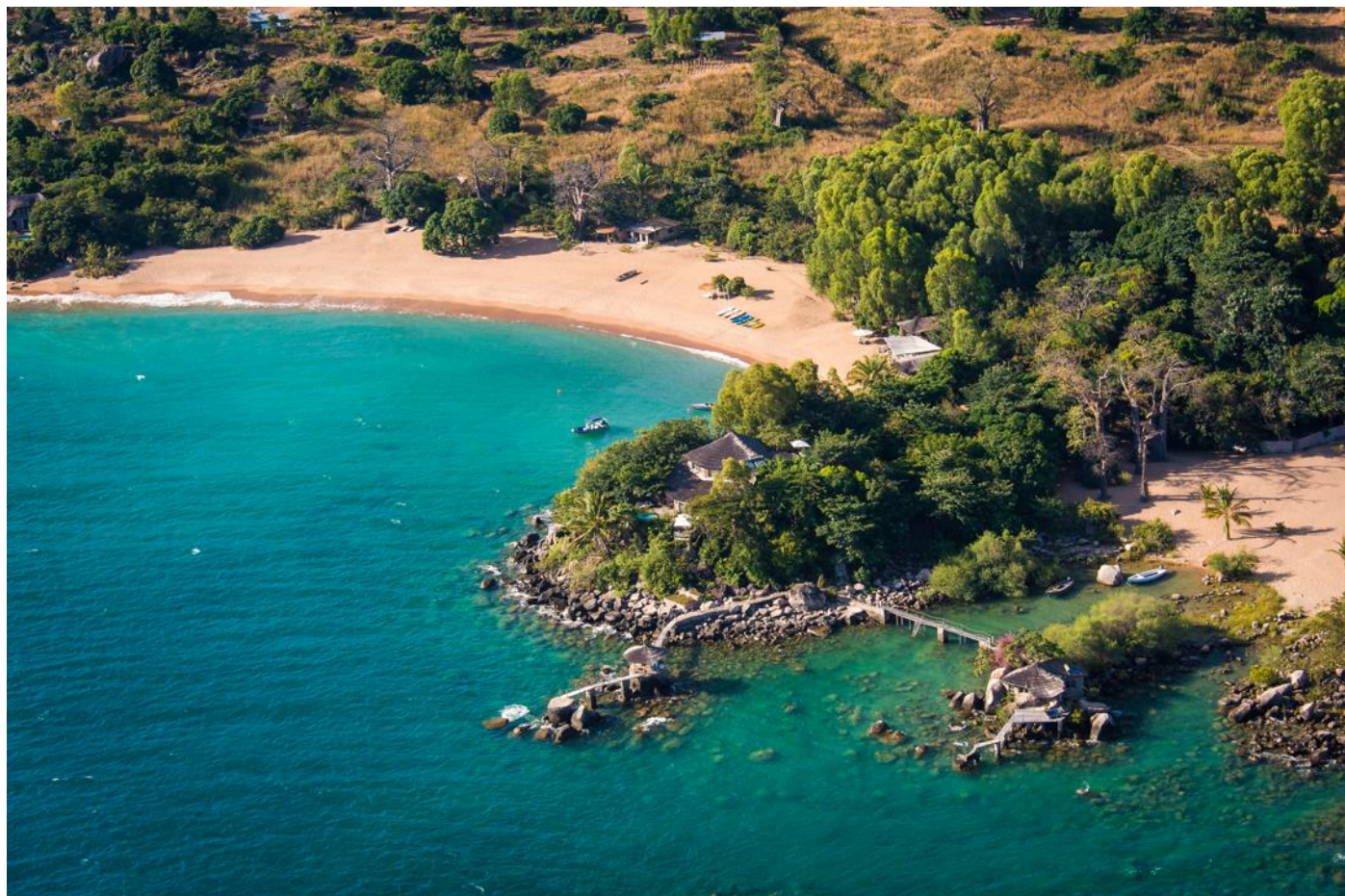
DAY THIRTEEN

This morning you will transfer to Mfuwe Airport with an optional stop at Project Luangwa craft shop or Tribal Textiles (to be scheduled in advanced, allow an extra 45 minutes) in time for your flight to Lilongwe in Malawi where you will go through customs before connecting to a short flight to Likoma Island. You are assisted through this process by an Ulendo Airlink representative.

The flight from Mfuwe-Lilongwe-Likoma with Ulendo Airlink is around 2 1/2 hours in total. Upon arrival at Likoma airstrip you will be met by Kaya Mawa and transferred directly to the lodge for 3 nights on an all-inclusive basis. Depending on the time of your arrival you should have enough time to settle into your room before enjoying your first Malawian sunset.

DAY FOURTEEN AND FIFTEEN

Over the next couple of days you can organise your beach holiday as you wish - activities here are varied and include swimming and snorkeling in the clear waters of the lake, kayaking, boat trips and sunset cruise, snorkeling or scuba diving and birding safaris, and more. You will also find a bar and restaurant where fine meals are served as part of the fully inclusive package. You can also choose to visit the island and its cathedral and pay a visit to the wonderful ladies of Katundu's workshop.



DAY SIXTEEN

This morning you will be transferred back to Likoma airstrip in time for your flight to Lilongwe where you will connect to your international departure home. The flight from Likoma-Lilongwe with Ulendo Airline is approximately 60 minutes.

You can extend your Zambian adventure by enjoying a few days in the Lower Zambezi National Park or Victoria Falls in Zambia – or Mvuu Lodge in Liwonde National Park or Mkulumadzi Lodge in Majete National Park in Malawi – please ask!

Safari includes: Meet and Greet at Lusaka and Lilongwe Airports, accommodation, internal flights, bar at bushcamps and Kaya Mawa (including spirits, wine, beer), meals, laundry, transfers, game viewing activities, local taxes, National Park Fees and VAT.

Excludes: departure tax and entry visas.



TRACKS SAFARIS – WE GET YOU CLOSER TO AFRICA!

TRACKS SAFARIS
WE GET YOU CLOSER

