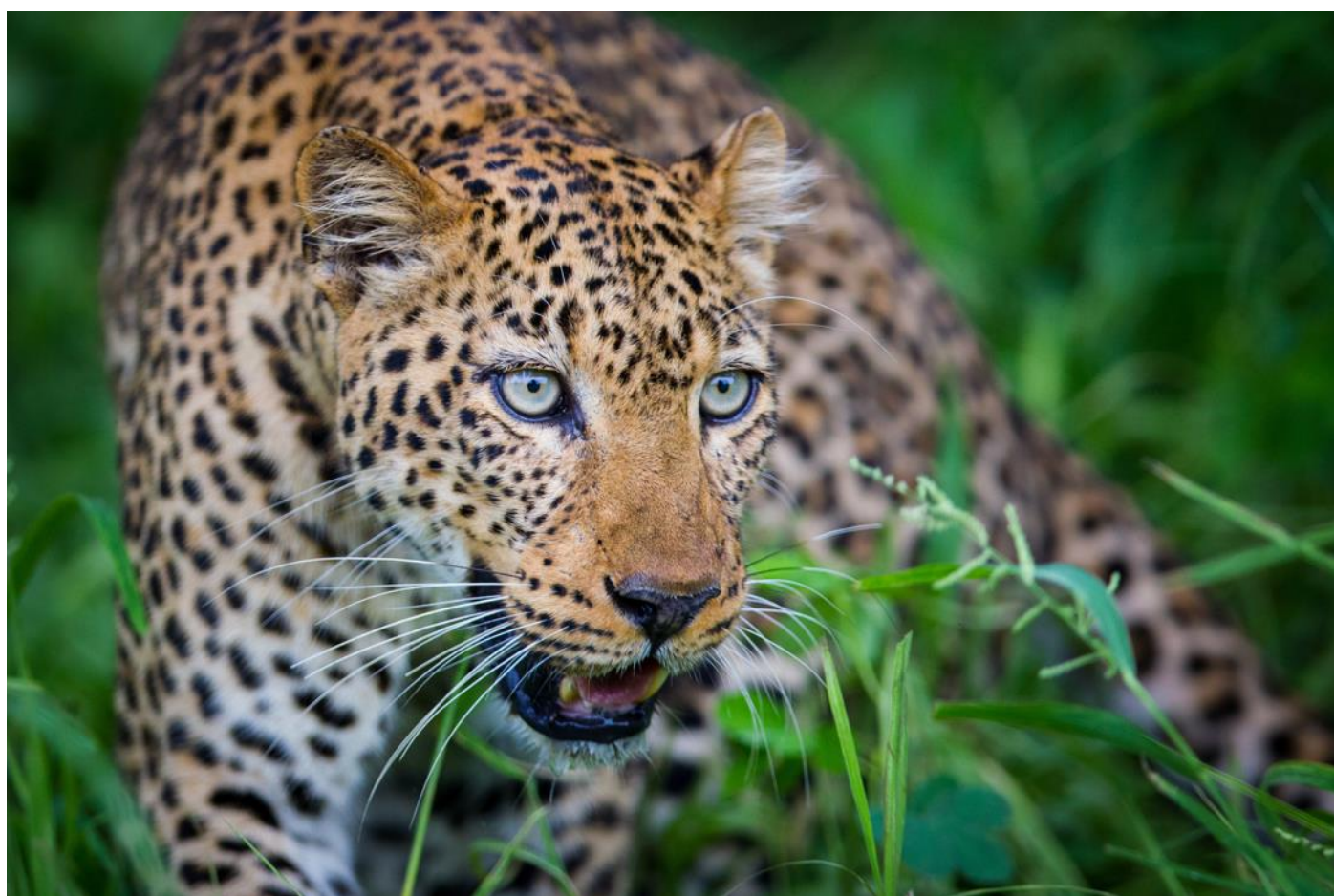


TRACKS SAFARIS

WE GET YOU CLOSER



15 NIGHT WILD ZAMBIA AN EXPLORATION OF ZAMBIA'S WILDLIFE



DAY ONE

On arrival into Lusaka International Airport you are met and transferred to Latitude 21 for one night on a bed and breakfast basis. The perfect place to unwind and relax after your long international flights you can start your safari fresh and revitalised!

Latitude 15° is set amidst the beautiful tree-lined avenues on the south-east corner of Lusaka, 20 minutes to the city centre and 30 minutes from Kenneth Kaunda International Airport. We're a hotel with 32 spacious guest rooms, and three 2-bedroom suites, a restaurant, bar, lounge and poolside terrace, blending modern Africa, with a cosmopolitan twist. We're also a private members' club – The Other Side – which offers all hotel guests a separate dining, drinking, networking and socialising den, a heated pool, a gym, a spa, a contemporary set of workspaces and a series of music, art, fashion, business and party events.



DAY TWO

Today you are transferred by road to the Kafue National Park and 3 nights at Ila Lodge on an all-inclusive basis. Kafue National Park, the largest and oldest park in Zambia, is one of the last great expanses of remote and unspoiled wilderness in Africa.



Ila Safari Lodge has 10 state of the art luxury safari tents perched each on their own deck reaching out over the banks of the Kafue River. Each tent has been individually designed to mesh with the flora surrounding it providing shade, privacy and your very own piece of Kafue wilderness. All tents feature en suite bathrooms and either outside showers or baths. Beds are extra length for the most comfortable night's sleep. Mosquito nets are spacious and billowing and are turned down for you each evening.

Lion, leopard, elephant and buffalo are all prominent and the Kafue has one of the highest population of wild dog in Africa and the and a diversity of antelope including the much revered roan and sable antelopes.

The diversity of habitat makes Kafue one of the best locations in Africa for birding. The Kafue riverbanks, wetlands, savannah and woodland boast an impressive 478 of Zambia's 733-recorded bird species. Among them African Wattled and Crowned Crane, Fish Eagle, Woolly-Necked Stork, Saddle Billed Stork, Goliath Heron, Ground Hornbill, African Fin Foot, Pel's Fishing Owl, Purple-Crested Lourie and Chaplin's Barbet.

DAY FIVE

Today you will drive deeper into the Kafue National Park to Busanga Plains where you will stay at Busanga Plains Camp for 3 nights on an all-inclusive basis.

The Plains Camp is a seasonal luxury bush camp located deep in the heart of the famous Busanga Plains in the north of Kafue National Park. The Busanga Plain is 720km² of palm groves, papyrus-choked reed beds and lily-covered lagoons representing one of the few wetland wildernesses in the world.

A wide variety of species is found on the plains including Lion, African Buffalo, Hippopotamus, Lechwe, Side-striped Jackal, and Blue Wildebeest. In addition, large numbers of elephants and 500 bird species are recorded; watch for roan antelope and the rare oribi antelope.

Busanga Plains Camp, in the middle of the flood plain, offers an intimate experience with accommodation consisting of four luxury safari tents with en-suite open air bathrooms and flushing toilets, each one overlooking the Busanga Plains. The tents are light, airy and spacious with large beds draped with mosquito nets.



DAY EIGHT

Today you will fly back to Lusaka International Airport and link with your flight to the South Luangwa National Park where you will be met by Time & Tide safaris and transferred by road to Kakuli Camp for 3 nights on an all-inclusive basis.

Perched high above the Luangwa River Kakuli offers impressive vistas of the river's many visitors below. The 5 suites have a long, low profile and a bright, airy feel and offer comfort in all seasons by incorporating features such as a covered open-air lounge and indoor and outdoor showers. Right from your suite, you can listen to the bellowing hippos, see bee-eaters perform their aerial acrobatics and watch elephants and giraffes wandering down to the river.

The elevated main chitenge and deck overlook the river and a permanent waterhole. Beneath the lounge is a wildlife hide that offers up-close views of the wildlife stopping by for a drink. In the dry season, the camp is a fantastic base for exploring by vehicle and foot. The area is renowned for some of the best game viewing opportunities in Zambia, with abundant leopards, a resident lion pride and a seasonal colony of the immensely beautiful carmine bee-eaters.

DAY ELEVEN

Today you will be transferred to Lion Camp by game drive for 3 nights on an all-inclusive basis. Lion Camp is situated at an oxbow at the top end of Lion Plains. The camp is built on the water's edge amongst woodlands and some large Sausage & Mahogany Trees.



The main lodge is a large open, spacious and airy thatched area with private nooks, seating areas and a pool. A well-stocked bar, real size snooker table, coffee station, shopping area and reading area form part of this offering. The openness of the lodge affords spectacular views of the plains with the constant presence of wildlife. There is a viewing hide at water level for close-up viewing of animals while drinking, affording amazing photographic opportunities.

Lion Camp offers 10 luxurious timber, canvas and thatch suites, on stilts with private decks. 8 luxury suites, 2 deluxe suites (each with an outside bath) All the suites have been designed to maximize the spectacular views of the plains with plenty of wildlife passing, affording our guests the opportunity of constant viewing, from either the main lodge decks or the luxury of your private suite deck.

DAY THIRTEEN

Today you will transfer by road back to Mfuwe Airport for your flight to the Lower Zambezi National Park. On arrival you will be met and transferred to Amanzi Camp for 3 nights on an all-inclusive basis.

Situated on the banks of the Ngwenya channel is the rustic and charming Amanzi Camp - the name Amanzi meaning water in the Indebele language and draws its inspiration from the site's close position on the Zambezi.

Amanzi camp overlooks a mosaic of islands that are home to a herd of elephant bulls. The camp has just 4 traditional, luxurious safari tents which are positioned on a raised wooden deck to allow for game to wonder around the camp freely.

Activities include 4 x 4 guided safaris, night drives boating and canoeing on the Zambezi River, walking safaris, birding and fishing.



DAY SIXTEEN

Today you will be transferred back to the airstrip for your flight back to Lusaka in time to connect with your international flight back home.

For more time on safari in Zambia you can extend this itinerary to enjoy time in Livingstone to see Victoria Falls – please ask!



TRACKS SAFARIS – WE GET YOU CLOSER TO ZAMBIA!

TRACKS SAFARIS
WE GET YOU CLOSER

