

# TRACKS SAFARIS

## WE GET YOU CLOSER



### 7 NIGHT LUANGWA WILDERNESS LODGE AND REMOTE BUSHCAMP EXPERIENCE



#### DAY ONE

On arrival into Lusaka International Airport you are met and assisted to check in for your flight to Mfuwe Airport. On arrival you are met and transferred to Kafunta River Lodge for 2 nights on an all-inclusive basis.

*Kafunta River Lodge, each of the luxury private chalets and the main lounge & dining area overlook the game rich flood plain. Beyond the plain is the Luangwa River and one of the best game viewing areas of the magical South Luangwa National Park, the premier park in Zambia and one of the best national parks in all of Africa.*

*Our eight private safari chalets have been built on raised wooden platforms and have thatched roofs. They are tastefully decorated with African style and charm. All were refurbished in 2014 to a high standard.*

*Additionally, there are two luxury suites which feature a private deck, an upstairs viewing veranda and a luxurious bathroom.*

*Central to the lodge is the spacious lounge and dining area that has been thatched in a traditional African style. A tall old semi-evergreen wild mango tree in the centre gives shade on sunny days.*

*Here is a welcoming camp fire which is lit each evening as the sun goes down and guests and guides meet around the fire to share the latest stories of wildlife encounters or, simply to listen to the sounds of the bush.*

*Kafunta River Lodge's spacious wooden deck above the waterhole provides our guests with undisturbed views over the plain. You can absorb the stunning location and, while darkness falls, enjoy sumptuous candle lit meals under a vast African night sky, whilst watching as animals of all types come to the floodlit waterhole, a simply magical experience.*

*A peaceful early morning breakfast on the deck as the sun rises is a great way to start your day, just before the excitement of a safari exploring the wildlife of the South Luangwa with your guide. The wildlife hide underneath the deck is also the perfect place to enjoy a spot of birding or photography during the hottest part of the day.*

*Kafunta River Lodge has its own pontoon 5 minutes from the lodge and this adventurous river crossing takes you into the more remote areas of the South Luangwa National Park, giving access to extraordinarily good wildlife encounters.*



### **DAY THREE**

Today you will transfer by road and game drive to Three Rivers Bush Camp for 2 nights on an all-inclusive basis. Three Rivers Camp is set at the confluence of the Luangwa, Kapamba and Lusangazi Rivers in South Luangwa, Zambia. The stylish tents lay under shady sausage trees and are facing either the Luangwa River or the game-rich lagoon.





*Sitting in the cosy chairs near the dining area, you will have boundless views of the Luangwa River and the Kapamba River, with their white beaches where hippos love basking in the sun. Or choose to rest on the plush day beds on top of your private viewing deck and observe giraffes and waterbucks strolling down to the lagoon. Bordering the national park, the area around camp is unspoiled and teeming with wildlife and offers unrivalled game viewing.*





*Three Rivers Camp is exquisitely intimate with only 5 spacious tents, elegantly decorated with natural materials and earthy hues. They have large gauzed windows embracing extensive views of the Luangwa River and the nearby lagoon. Each tent has its own wooden deck with comfy chairs to enjoy the surrounding vistas.*

*The en-suite bathrooms include indoor and outdoor showers, double sinks and flushing toilets.*

*The distinctive feature of each guest room is its private elevated platform, safely connected to the tent for convenient access day and night. Ready with plush beds, the platform lets you absorb the stunning views during the day or sleep under the stars surrounded only by the sights and sounds of the African bush.*

*The camp offers game drives in the South Luangwa National Park along with bush walks around the camp area and down the river banks. Encounter elephants, giraffes, waterbuck, and maybe the relatively rare roan antelope with a chance to also spot lions, leopards or wild dogs. Short night drives are also offered before returning to camp for dinner.*

#### **DAY FIVE**

Today you will walk from Three Rivers Camp to Island Bush Camp for two nights on an all-inclusive basis. You will walk while your bags will be transferred separately. Alternatively you can transfer by game drive if you would prefer.

*Island Bush Camp offers untouched wilderness and walking safaris in the heart of South Luangwa National Park, Zambia. This authentic Zambian bush camp is set under the cool shade of old mahogany trees on the banks of the Luangwa River.*



*Island Bush Camp has just 5 bush chalets tastefully decorated in a simple, chic bush style. They are open to the front with stunning views over the river and allow the sounds of the bush to drift through. Each chalet is built out of natural materials and sits on a wooden platform high off the ground. Cosy beds are turned down each night behind tented mozzie nets.*



*Each chalet has an en suite bathroom on the same level as the rooms also facing the river. The bathroom is open to the sky, with a stylish and practical canvas bucket shower, that is filled with hot water once a day. There is cold running water and flush toilets.*

*The shady lounge area is the focal point of the camp, with comfortable chairs and attentive staff behind the bar. This is just the perfect place to relax with binoculars at hand to take a closer look at any of the passers-by on 'bush TV'. The fireplace right at the river front is the ideal place to watch the sun rise and fall. Here you marvel at the galaxy of stars and spend the evening listening to the sounds of the wild or to the many bush tales the guides like to share with their guests.*

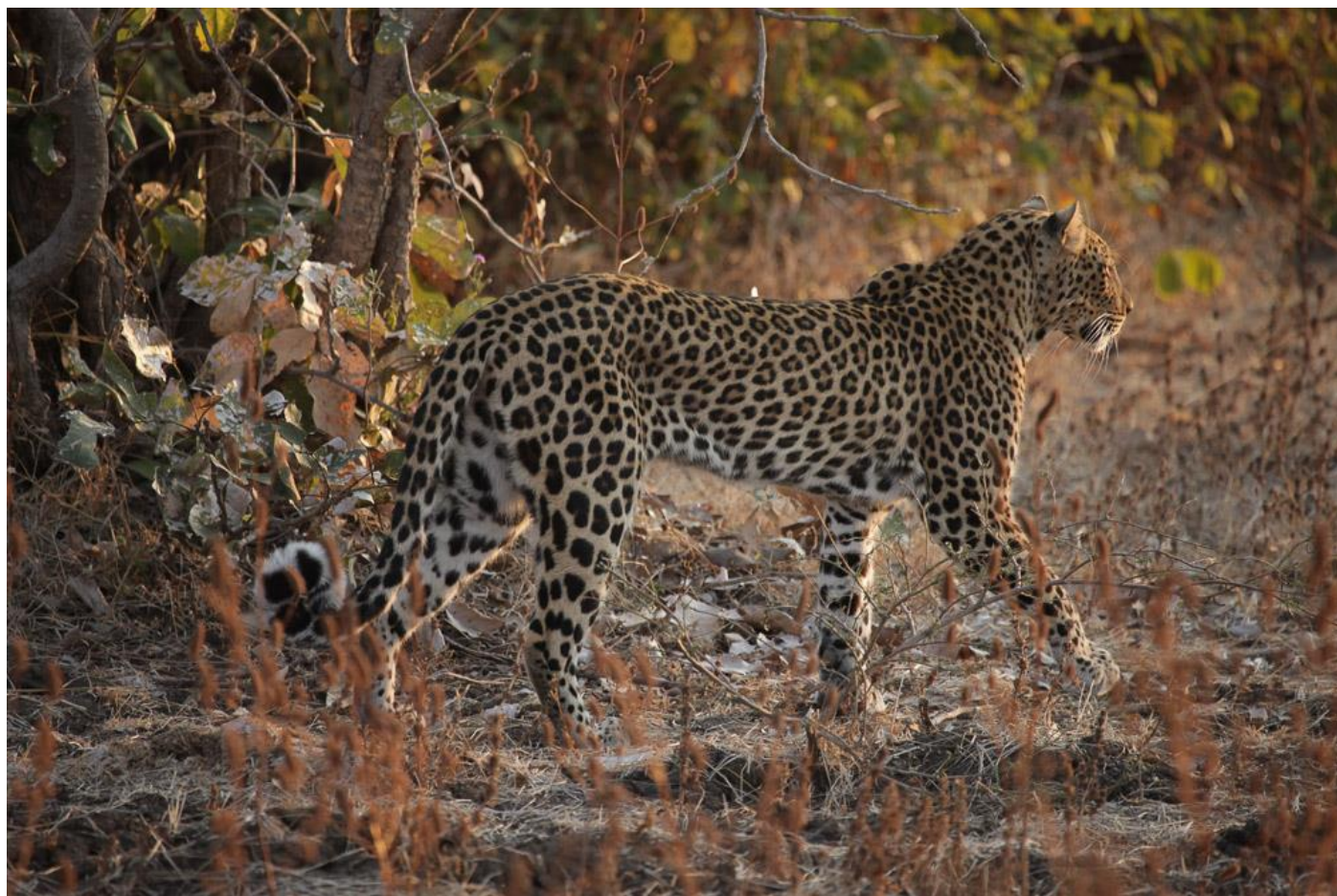
*Walking safaris are our main activity in this heavenly place. This is your chance to explore the bush on a different level. You walk in small groups and will be escorted by an armed official wildlife scout and our experienced guides. This ensures your safety and gives you an exciting and educational view of the bush at ground level.*

#### **DAY SEVEN**

Today you will transfer back to Kafunta River Lodge for 1 night on an all-inclusive basis. Enjoy a further afternoon in the South Luangwa National Park and depending on the time of your flight – another morning game drive or walk.

#### **DAY EIGHT**

Today you will transfer back to Mfuwe Airport in time for your flight back to Lusaka which will link with your international flight back home.



**Why not extend your safari and enjoy more time in the South or North Luangwa National Parks, the Lower Zambezi or Livingstone. Alternatively head to Lake Malawi for some rest and relaxation before flying home – please ask!**



**TRACKS SAFARIS – WE GET YOU CLOSER TO AFRICA!**

**TRACKS SAFARIS**  
**WE GET YOU CLOSER**

