

TRACKS SAFARIS

WE GET YOU CLOSER



7 NIGHT 'RIVER JOURNEYS'

A GREEN SEASON SAFARI IN THE SOUTH LUANGWA NATIONAL PARK

22 January - 31 March



This safari covers one of Zambia's premier parks – South Luangwa. The Luangwa Valley, which marks the end of the Great Rift Valley, is one of the last unspoiled wilderness areas and possibly the finest wildlife sanctuary in Africa.

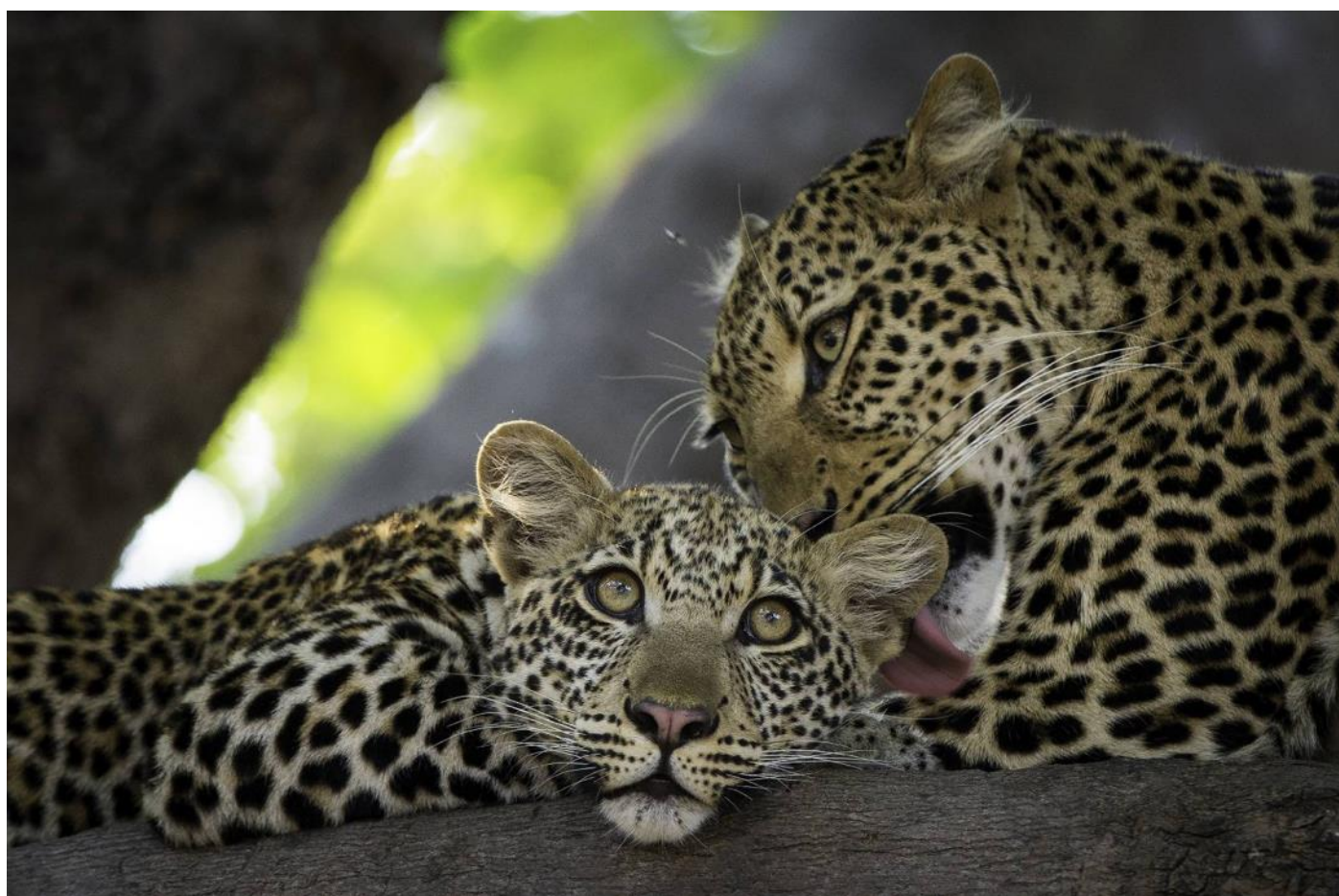
The Luangwa Valley is at its most dramatic in the Emerald Season, with the Luangwa River now flowing over into the brimming lagoons. Boating into these lagoons, flooded ebony groves and flowing channels gives you a view of the Valley which is normally inaccessible during this season.

The Luangwa River is one of the last remaining major rivers in Africa, and even in the world, that has not been damned for hydropower. This vast river still annually rises, floods into lagoons and channels, changes course and resulting in new lagoons and in so doing creates a rich flood plain river system. To be in the heart of the park, at peak flood time, staying at the first camp built in Zambia (Nsefu) with the river being your only access, is quite an experience.

You will also be able to explore a variety of areas of the Luangwa from 3 locations; Luangwa River Camp, Nsefu & Nkwali Camps. This enhances the type of game and overall safari experience.

Activities on offer:

South Luangwa: walking, game drives (day and night), Kawaza Village Tour, Tribal Textiles tour (for souvenirs), Chipembele Wildlife Orphanage visit.



DAY ONE

On arrival into Lusaka International Airport you are met and assisted to check in for your flight to Mfuwe Airport. On arrival you are met and transferred to Nkwali Camp on an all-inclusive basis.

Nkwali is located on the banks of the Luangwa on a magnificent meander in the river overlooking the National Park where leopards roam along the bank and can often be spotted from camp. Situated on Robin Pope Safaris' private land outside the park there is a private game viewing area behind camp as well as exclusive access into the park either by boat or across the pontoon.

The six chalets with bamboo woven walls and thatch roofs offer a rustic luxury opening up to magnificent views of the river as well as open air en-suite bathrooms.



DAY TWO

Today you can explore The South Luangwa National Park with a mix of walking, game drives and boating.

DAYS THREE TO FIVE

Today you will take the boat up to Nsefu Camp. This will take between 2 and 4 hours depending on what you see on the way. The Luangwa River will be high and many of the lagoons will be full. The bird life is amazing along the river and you will often see a bull elephant or a lion on the banks. Nsefu Camp is on a sweeping bend of the Luangwa River. There are six round rondavels with luxurious en suite facilities and each room has a clear view of the river through large windows and from the new wooden verandahs. On arrival at Nsefu you will be shown to your accommodation and then lunch will be served followed by a well-deserved siesta before you set off on an afternoon activity.



Over the next few days you will explore the area by boat and by foot. There are many lagoons, ebony groves and channels that will be flooding and so you will be boating over land which is the driving area of the park in the dry season. Also, taking a scout with you, you will be able to enjoy a walk to explore further afield in the park for an all day picnic. Lunch will be under a tree or next to a lagoon and you will then be able to take a siesta or simply spend a lazy couple of hours reading a book or watching the fascinating animals and landscape around you. Returning to

camp when you are ready – you may decide to continue straight on your evening boat ride and return to camp at sunset – these are very flexible days.



DAY SIX

Today you will boat back to Nkwali in the morning, where you will enjoy wide views across the Luangwa River. Depending on your arrival time in the day you will enjoy a lunch looking out over the lagoon to the back of Nkwali or if in the afternoon for tea and the afternoon and night game drive.

DAY SEVEN

At dawn breakfast is served around the campfire. The porridge heated on the fire and toast cooked by the coals. The morning walk or drive will leave soon after and your photographic expedition will begin, entering the park by boat from the camp or by the nearby pontoon. The game in the area is excellent – and includes many family herds of elephants and the endemic species of giraffe, the Thornicroft Giraffe.

A mid-morning break of tea, coffee and cake will be taken by a scenic point on a lagoon or the Luangwa River.

Return to camp for lunch around mid-day. After lunch you can cool off in the swimming pool or siesta. Tea will be served in the afternoon and then off on an afternoon game drive that continues into the early night giving the chance to see the nocturnal world. Usually one returns to camp about 20.00 hrs with dinner generally at 20.30

DAY EIGHT

After breakfast you will be transferred to Mfuwe Airport for your flight to Lusaka and onward flight home.

You can extend your green season safari by spending more time at a lodge in the South Luangwa National Park or perhaps in Livingstone and over to Botswana. Alternatively relax in Cape Town for a few days – please ask!



TRACKS SAFARIS – WE GET YOU CLOSER TO AFRICA!

TRACKS SAFARIS
WE GET YOU CLOSER

