



&BEYOND



&BEYOND EXPEDITIONS

Mobile Camping in Botswana

Classic Explorer Expedition

The quintessential African safari experience



CLASSIC EXPLORER EXPEDITION

8 nights / 9 days

Chobe National Park, Savute and Okavango Delta

The much-loved Classic Explorer Expedition takes you to the renowned regions of the Chobe National Park, Savute and the Okavango Delta on a spectacular eight night mobile camping adventure. Here, you are offered a wonderful combination of land and water activities such as game drives, private boat cruises and mokoro excursions. As an added delight you also have the option to include the Victoria Falls onto your itinerary.





WHAT MAKES THIS SAFARI SPECIAL

- Rustic and comfortable **mobile camping** allows you to get closer than ever to the spectacular African wilderness, with the same personalised &Beyond experience.
- Your entire journey will be hosted by our most senior and experienced **private guides** who offer a wealth of knowledge about your chosen destinations and an engaging experience throughout your adventure.
- Your mobile camping adventure is **fully inclusive** – from the time you arrive in Botswana, every aspect of your journey will be conveniently organised for you.
- This ultimate African safari adventure guarantees an intimate, **exclusive experience** with a minimum of two guests and a maximum of six guests per departure, ensuring window seats on game drives for all. Children over 16 years of age are welcome.
- All tours have scheduled departure dates.
- **Best of Northern Botswana** – Chobe, Savute, private concessions in the Okavango Delta. (Add Victoria Falls to the beginning of your trip for added guest delight).
- This adventure offer the perfect combination of **land and seasonal water activities** such as private boat cruises, game drives, mokoro excursions and fishing.

PERFECT FOR

- Adventure seekers
- Wildlife enthusiasts
- Small groups or families with children aged 16 and older
- Individual travellers

*Due to the physical nature of these safari's and the accommodation types, the suggested maximum age for &Beyond Botswana Mobile Camping Expeditions is 70 years. In addition, these are not suitable for guests who have mobility issues, or are visually or hearing impaired.



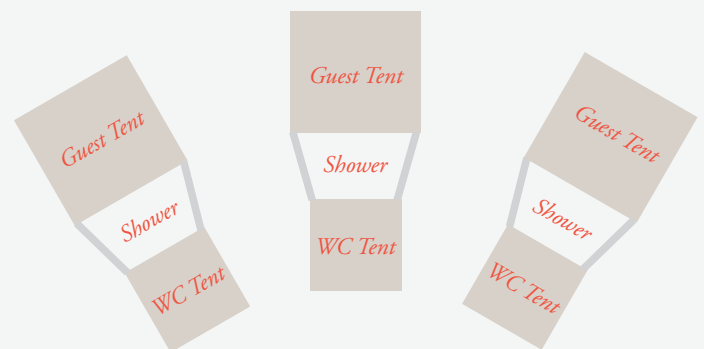
MOBILE CAMPING ACCOMMODATION

One of the main draw cards to selecting &Beyond Expeditions as your next adventure is the rustic and comfortable mobile camping accommodation.

- Enjoy fully serviced mobile camping. By this we mean that you can expect the renowned &Beyond service during your adventure such as a butler, housekeeper and chefs who prepare the most scrumptious pan African menus.
- Accommodation is in spacious expedition dome tents (4 metres x 4 metres in size), comfortable beds, ensuite bathroom (3 metres x 3 metres in size), separate w.c. and hot bucket shower.
- The mobile camp boasts three ensuite safari tents.
- As this is the quintessential African safari experience there is no electricity in camps, but cell phones, cameras and other electronic devices can be charged on the safari vehicle.

MOBILE CAMP LAYOUT

Please note that this layout may change depending on the campsite's location and is for reference purposes only.



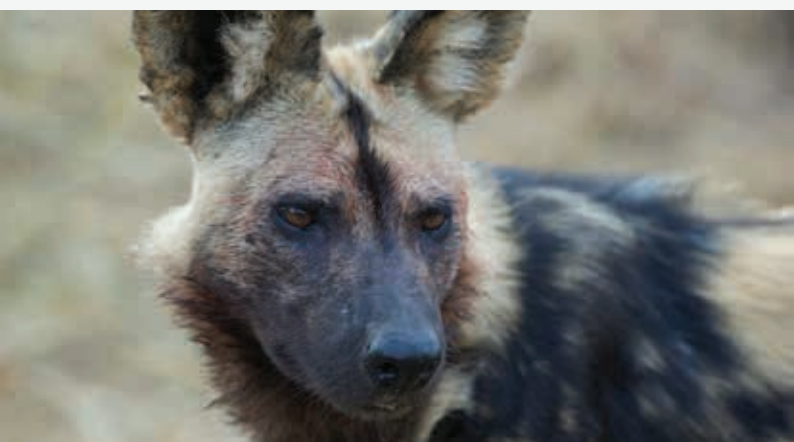
Dining Gazebo



*Kitchen Tent and
Staff Accommodation
zoned off*



What to expect



DAY 1 - 2

Chobe National Park

Your journey begins at Kasane Airport where you will meet your private guide who will accompany you throughout your adventure. Your guide will then drive you to a secluded camp site in Chobe National Park, where you will spend two nights. Chobe National Park is home to thrilling action-packed wildlife interactions and the largest concentration of elephants in Africa. Here you can embark on thrilling game drives and enjoy a spectacular private boat cruise on the Chobe River. Experience unforgettable game drives and private boat cruises on the Chobe River.

DAY 3 - 4

Savute

The next leg of your tour will be a game drive transfer that will take you into the beautiful Savute area of the Chobe National Park. Here, surrounded by pristine wilderness, you will spend two nights at a mobile camp, however during the months of February and April you will be unwinding at the delightful &Beyond Savute Under Canvas in more spacious meru style tents. Offering five tents, &Beyond Savute Under Canvas allows you to interact with other guests that may be staying there during your expedition, the ideal time to swap stories of your captivating safari. The area is known for its large prides of lion, African wild dog, leopard and spotted hyena that prowl the landscape in search of prey. Adventures in the Savute include game drives and the opportunity to see volcanic outcrops and Bushmen paintings.



DAY 5 - 6

Moremi Game Reserve, Okavango Delta

After exploring the Savute, you will embark on a scenic game drive to the glorious Moremi Game Reserve within the Okavango Delta for a two night stay, where you will be spoilt for choice with the assortment of excellent wildlife sightings in the area. This particular region of the Delta offers some of the best wildlife encounters where you can see lion, leopard, African wild dog, kudu, elephant, semi-aquatic lechwe, hippo and giraffe.



DAY 7 - 8

Okavango Delta

On the final leg of your journey, you will be flown to the famous Nxabega concession in the Okavango Delta. Here you will spend two nights at the Expeditions camp site. Experience an adventure-filled mix of water and land activities from game drives to mokoro and catch-and-release fishing. Please note that the water based activities are seasonal.

DAY 9

Today, your guide will accompany you to Maun and will wave a fond farewell as you board your flight homeward from Maun International Airport.



Table of facts

Number of nights and days 8 nights / 9 days

Destinations Chobe National Park, Savute and Okavango Delta

Accommodation Mobile camping throughout
(& Beyond Savute Under Canvas during February to April)

Starting point Kasane

Ending point Maun

Logistics Vehicle and light aircraft

Travel season February - December

Wildlife

- Elephant (large herds in the Chobe and Savute)
- Buffalo
- Lion (large prides can be seen in the Savute)
- African wild dog
- Leopard
- Spotted hyena
- Antelopes such as sable, puku (Chobe is the only destination to see this rare animal), Chobe bushbuck, kudu and klipspringer
- Plains game such as wildebeest and giraffe

Activities

- Game drives
- Private boat cruises
- Mokoro trips (seasonal)
- Fishing (seasonal)
- Birding
- Stargazing

2019 departure dates

JANUARY 2019

MON	TUE	WED	THU	FRI	SAT	SUN
31	01	02	03	04	05	06
07	08	09	10	11	12	13
14	15	16	17	18	19	20
21	22	23	24	25	26	27
28	29	30	31	01	02	03

FEBRUARY 2019

MON	TUE	WED	THU	FRI	SAT	SUN
28	29	30	31	01	02	03
04	05	06	07	08	09	10
11	12	13	14	15	16	17
18	19	20	21	22	23	24
25	26	27	28	01	02	03

MARCH 2019

MON	TUE	WED	THU	FRI	SAT	SUN
25	26	27	28	01	02	03
04	05	06	07	08	09	10
11	12	13	14	15	16	17
18	19	20	21	22	23	24
25	26	27	28	29	30	31

APRIL 2019

MON	TUE	WED	THU	FRI	SAT	SUN
01	02	03	04	05	06	07
08	09	10	11	12	13	14
15	16	17	18	19	20	21
22	23	24	25	26	27	28
29	30	01	02	03	04	05

MAY 2019

MON	TUE	WED	THU	FRI	SAT	SUN
29	30	01	02	03	04	05
06	07	08	09	10	11	12
13	14	15	16	17	18	19
20	21	22	23	24	25	26
27	28	29	30	31	01	02

JUNE 2019

MON	TUE	WED	THU	FRI	SAT	SUN
27	28	29	30	31	01	02
03	04	05	06	07	08	09
10	11	12	13	14	15	16
17	18	19	20	21	22	23
24	25	26	27	28	29	30

JULY 2019

MON	TUE	WED	THU	FRI	SAT	SUN
01	02	03	04	05	06	07
08	09	10	11	12	13	14
15	16	17	18	19	20	21
22	23	24	25	26	27	28
29	30	31	01	02	03	04

AUGUST 2019

MON	TUE	WED	THU	FRI	SAT	SUN
29	30	31	01	02	03	04
05	06	07	08	09	10	11
12	13	14	15	16	17	18
19	20	21	22	23	24	25
26	27	28	29	30	31	01

SEPTEMBER 2019

MON	TUE	WED	THU	FRI	SAT	SUN
26	27	28	29	30	31	01
02	03	04	05	06	07	08
09	10	11	12	13	14	15
16	17	18	19	20	21	22
23	24	25	26	27	28	29
30	01	02	03	04	05	06

OCTOBER 2019

MON	TUE	WED	THU	FRI	SAT	SUN
30	01	02	03	04	05	06
07	08	09	10	11	12	13
14	15	16	17	18	19	20
21	22	23	24	25	26	27
28	29	30	31	01	02	03

NOVEMBER 2019

MON	TUE	WED	THU	FRI	SAT	SUN
28	29	30	31	01	02	03
04	05	06	07	08	09	10
11	12	13	14	15	16	17
18	19	20	21	22	23	24
25	26	27	28	29	30	01

DECEMBER 2019

MON	TUE	WED	THU	FRI	SAT	SUN
25	26	27	28	29	30	01
02	03	04	05	06	07	08
09	10	11	12	13	14	15
16	17	18	19	20	21	22
23	24	25	26	27	28	29
30	31	01	02	03	04	05

 Scheduled Departure Date

2020 departure dates

JANUARY 2020

MON	TUE	WED	THU	FRI	SAT	SUN
29	30	31	01	02	03	04
05	06	07	08	09	10	11
12	13	14	15	16	17	18
19	20	21	22	23	24	25
26	27	28	29	30	31	01

FEBRUARY 2020

MON	TUE	WED	THU	FRI	SAT	SUN
26	27	28	29	30	31	01
02	03	04	05	06	07	08
09	10	11	12	13	14	15
16	17	18	19	20	21	22
23	24	25	26	27	28	29

MARCH 2020

MON	TUE	WED	THU	FRI	SAT	SUN
01	02	03	04	05	06	07
08	09	10	11	12	13	14
15	16	17	18	19	20	21
22	23	24	25	26	27	28
29	30	31	01	02	03	04

APRIL 2020

MON	TUE	WED	THU	FRI	SAT	SUN
29	30	31	01	02	03	04
05	06	07	08	09	10	11
12	13	14	15	16	17	18
19	20	21	22	23	24	25
26	27	28	29	30	01	02

MAY 2020

MON	TUE	WED	THU	FRI	SAT	SUN
26	27	28	29	30	01	02
03	04	05	06	07	08	09
10	11	12	13	14	15	16
17	18	19	20	21	22	23
24	25	26	27	28	29	30
31	01	02	03	04	05	06

JUNE 2020

MON	TUE	WED	THU	FRI	SAT	SUN
31	01	02	03	04	05	06
07	08	09	10	11	12	13
14	15	16	17	18	19	20
21	22	23	24	25	26	27
28	29	30	01	02	03	04

JULY 2020

MON	TUE	WED	THU	FRI	SAT	SUN
28	29	30	01	02	03	04
05	06	07	08	09	10	11
12	13	14	15	16	17	18
19	20	21	22	23	24	25
26	27	28	29	30	31	01

AUGUST 2020

MON	TUE	WED	THU	FRI	SAT	SUN
26	27	28	29	30	31	01
02	03	04	05	06	07	08
09	10	11	12	13	14	15
16	17	18	19	20	21	22
23	24	25	26	27	28	29
30	31	01	02	03	04	05

SEPTEMBER 2020

MON	TUE	WED	THU	FRI	SAT	SUN
30	31	01	02	03	04	05
06	07	08	09	10	11	12
13	14	15	16	17	18	19
20	21	22	23	24	25	26
27	28	29	30	01	02	03

OCTOBER 2020


MON	TUE	WED	THU	FRI	SAT	SUN
27	28	29	30	01	02	03
04	05	06	07	08	09	10
11	12	13	14	15	16	17
18	19	20	21	22	23	24
25	26	27	28	29	30	31

NOVEMBER 2020

MON	TUE	WED	THU	FRI	SAT	SUN
01	02	03	04	05	06	07
08	09	10	11	12	13	14
15	16	17	18	19	20	21
22	23	24	25	26	27	28
29	30	01	02	03	04	05

DECEMBER 2020

MON	TUE	WED	THU	FRI	SAT	SUN
30	31	01	02	03	04	05
06	07	08	09	10	11	12
13	14	15	16	17	18	19
20	21	22	23	24	25	26
27	28	29	30	31	01	02

 Scheduled Departure Date